

Vocabulary

1 Completa le parole in ciascuna frase.

- They sell really nice fish at the fishmonger's.
- That b_____ always makes beautiful cakes.
 - Let's go to the n_____ and buy a newspaper.
 - You can buy really nice trainers and tracksuits at this s_____ s_____.
 - The author is coming into the b_____ next week to talk about her new story.
 - Let's buy some vegetables from the g_____.
 - I want to go to the b_____ to get some meat.

Grammar

2 Completa il brano con la forma del superlativo degli aggettivi.

We went to Oxford Street yesterday. It's one of the most famous (*famous*) shopping streets in London, and some of the ¹_____ (*nice*) shops in London are there.

I wanted to buy a new mobile phone, but the ²_____ (*good*) phones were also the ³_____ (*expensive*). The ⁴_____ (*cheap*) phone was £55. It was also the ⁵_____ (*heavy*) phone in the shop and it didn't have a camera, so we didn't buy it. So I still have the ⁶_____ (*old*) mobile phone in my class!

3 Scrivi frasi e domande. Usa i superlativi e il verbo *be*.

- it/exciting/PC game in the shop.
It's the most exciting game in the shop.
- you/noisy/class/in the school!

 - Mick/intelligent/student in the class.

 - what/dangerous/animal/in the world?

 - she/pretty/film star in Hollywood.

5 where/wide/river in the world?

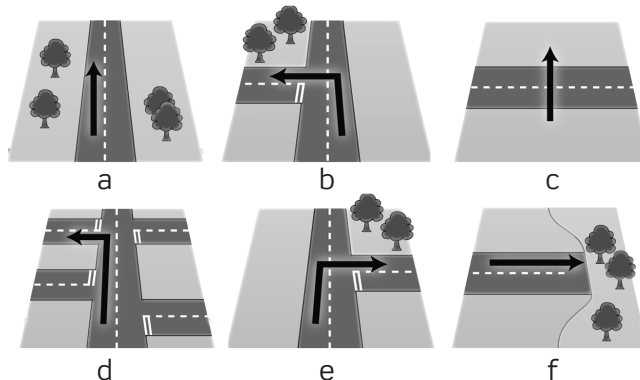
6 June 21st/long/day/the year.

4 Completa le frasi con la preposizione corretta.

- Who is standing next to you in this photo? (*accanto*)
- My house is _____ the supermarket. (*di fronte a*)
 - He's _____ three people, but he can still win the race. (*dietro*)
 - We live _____ the train station. It's only five minutes from here. (*vicino*)
 - The shoe shop is _____ the greengrocer's and the butcher's. (*fra*)
 - I'm watching the TV - please don't stand _____ it. (*davanti*)

Functions

5 Usa le figure per completare il dialogo. Scrivi una o due parole per ogni spazio.



- A Excuse me. How can I get to Martin's Department Store?
- B Go straight on (a) then ¹_____ (b). The shop is in Brinfield Street.
- A Excuse me. Could you tell me the way to the railway station?
- B Yes. ²_____ (c) the road, then take the second road on ³_____ (d).
- A Hi. How can I get to the nearest underground station?
- B ⁴_____ (e) and walk to the ⁵_____ (f) the road. The station is in front of you.